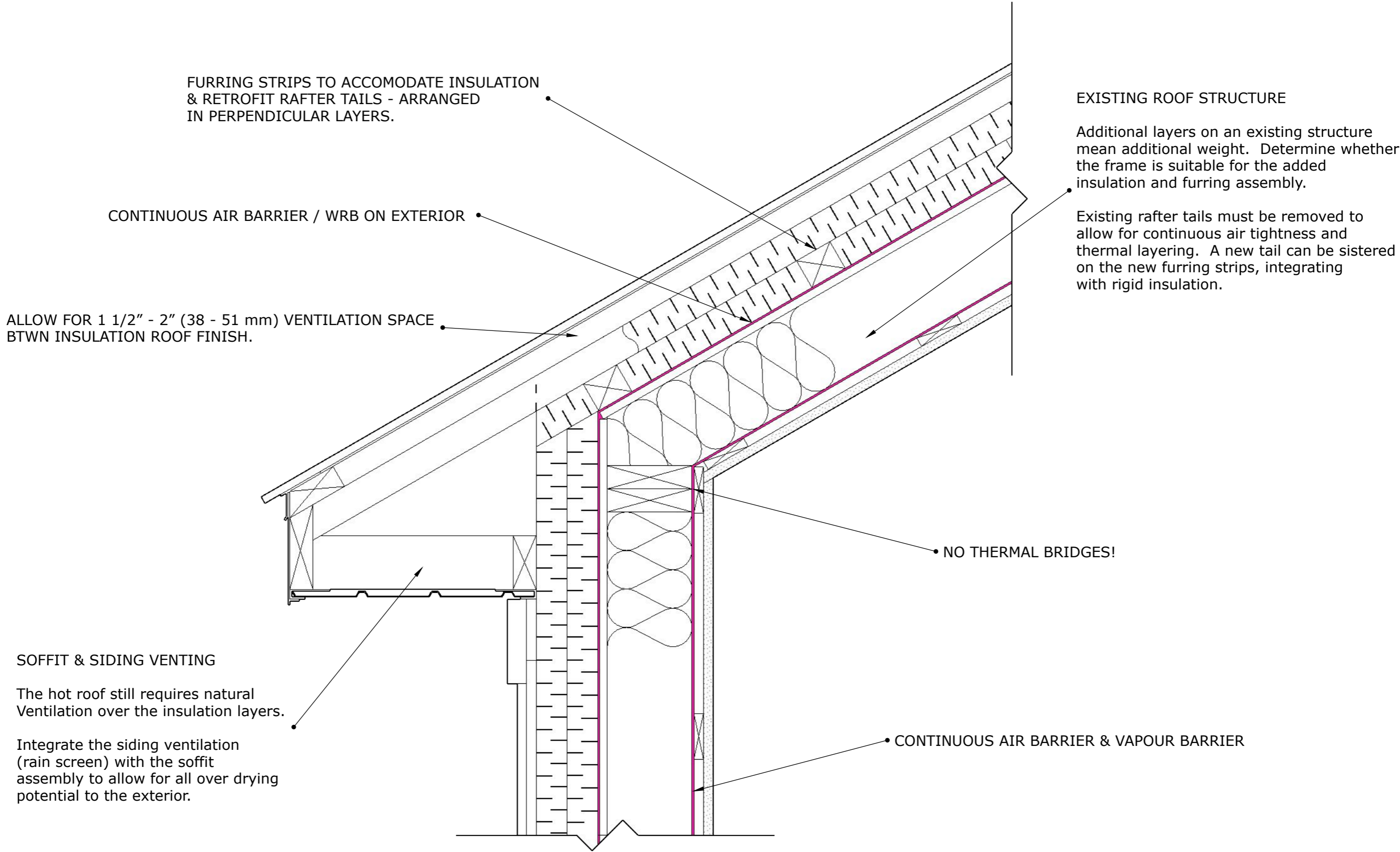


**AIR BARRIER & INSULATION RETROFIT
HOT ROOF APPLICATION (CATHEDRAL CEILING)**
(Not to Scale)



FURRING STRIPS TO ACCOMODATE INSULATION & RETROFIT RAFTER TAILS - ARRANGED IN PERPENDICULAR LAYERS.

EXISTING ROOF STRUCTURE
Additional layers on an existing structure mean additional weight. Determine whether the frame is suitable for the added insulation and furring assembly.

CONTINUOUS AIR BARRIER / WRB ON EXTERIOR

Existing rafter tails must be removed to allow for continuous air tightness and thermal layering. A new tail can be sistered on the new furring strips, integrating with rigid insulation.

ALLOW FOR 1 1/2" - 2" (38 - 51 mm) VENTILATION SPACE BTWN INSULATION ROOF FINISH.

NO THERMAL BRIDGES!

SOFFIT & SIDING VENTING
The hot roof still requires natural Ventilation over the insulation layers.
Integrate the siding ventilation (rain screen) with the soffit assembly to allow for all over drying potential to the exterior.

CONTINUOUS AIR BARRIER & VAPOUR BARRIER